

### DETTAGLI

- Coreana
- Sfoderata con bottone in metallo più alamaro dorato

### TAGLIE

XS ÷ 3XL  
Slim Fit

### COLORE

120 Panna

### TESSUTO

100% poliestere  
220 g / m<sup>2</sup>



Le misure indicate si riferiscono alle taglie **S** per i capi femminili, **L** per i capi maschili. Per i capi a taglia unica le misure indicate sono effettive.

### COLORI DISPONIBILI



120 Panna

TABELLE TAGLIE  
E CORRISPONDENZE

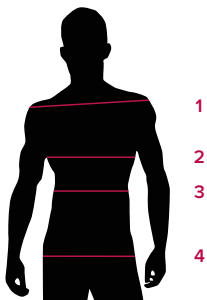
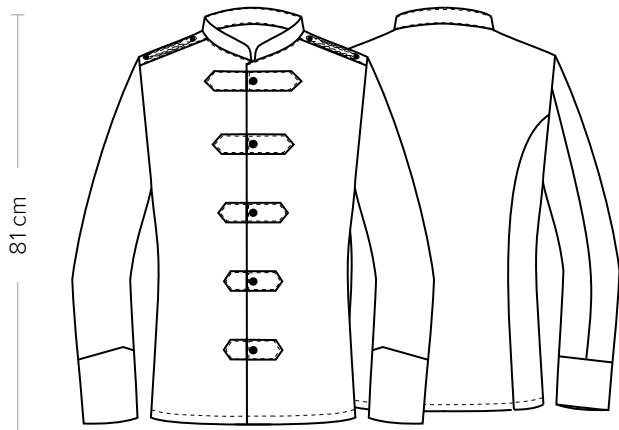


TABELLA ST-G1 SLIM FIT	XS	S	M	L	XL	XXL	3XL	4XL	5XL
<b>1 - SPALLE</b>	44	45	46	47	49	51	53	55	57
<b>2 - TORACE</b> circonferenza	92-96	96-100	100-104	104-111	111-116	116-124	124-132	132-142	142-152
<b>3 - VITA</b> circonferenza	80-84	84-88	88-92	92-99	99-106	106-116	116-126	126-138	138-148
<b>4 - BACINO</b> circonferenza	92-96	97-101	101-105	105-111	111-117	117-125	125-133	133-143	143-153

**GUIDA ALLE TAGLIE** **1)** Prendere le misure anatomiche (corpo con abbigliamento intimo) senza stringere mantenendo ben teso il metro. **Nota:** nel caso vogliate indossare dei camici già con dell'abbigliamento sotto prendete le misure già abbigliati. **2)** Nel caso tra le misure prese vi fosse una misura a cavallo fra 2 taglie vi consigliamo di prendere quella più grande. **3)** Le misure della tabella sono espresse in centimetri.



### DETAILS

- Mandarin collar
- Unlined with metal buttons and gold frogs

### SIZES

XS ÷ 3XL  
Slim Fit

### COLOURS

120 Cream

### FABRIC

100% polyester  
220 g / m<sup>2</sup>



The measures indicated refer to sizes **S** for women, **L** for men. For one-size-fits-all garments, the measurements indicated are effective.

### AVAILABLE COLOURS



120 Cream

SIZE TABLES  
AND CORRESPONDENCES

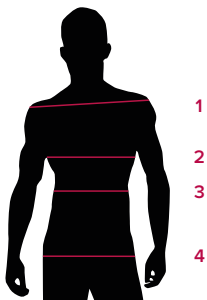


TABLE ST-G1 SLIM FIT		XS	S	M	L	XL	XXL	3XL	4XL	5XL
<b>1 - SHOULDERS</b>		44	45	46	47	49	51	53	55	57
<b>2 - CHEST</b> circumference		92-96	96-100	100-104	104-111	111-116	116-124	124-132	132-142	142-152
<b>3 - WAIST</b> circumference		80-84	84-88	88-92	92-99	99-106	106-116	116-126	126-138	138-148
<b>4 - HIPS</b> circumference		92-96	97-101	101-105	105-111	111-117	117-125	125-133	133-143	143-153

**SIZE GUIDE** **1)** Take the anatomical measurements (body with underwear) without tightening, keeping the measuring tape taut. Note: in case you want to wear of the gowns already with the clothing underneath take the measurements already dressed. **2)** If there is a measure between 2 sizes between the measurements taken, we advise you to take the bigger one. **3)** The measurements in the table are expressed in centimeters.